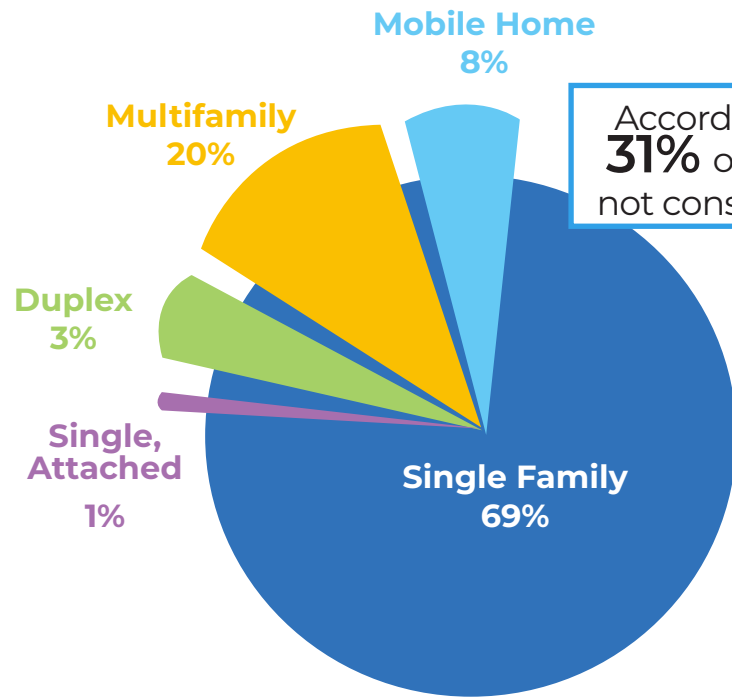




Did You Know?

HOUSING AND LAND USE



According to **2019** Census estimates, about **31%** of all households in Bonners Ferry are not considered affordable by HUD standards.

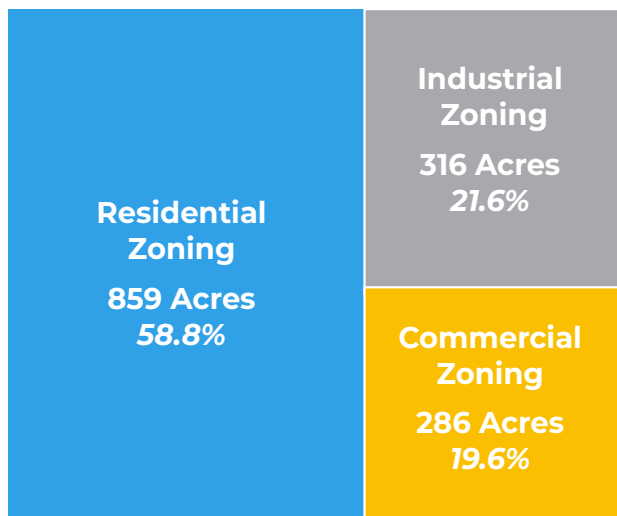
From **2020 to 2021/22** the median selling price of homes in Boundary County increased from **\$342,000** to over **\$400,000**

-Dealing with growth in Bonner, Boundary Counties. Raphael Barta (2021).

KEY TAKEAWAYS:

- The small-town feel and recreation opportunities bring many visitors, new residents, and remote workers.
- There may be opportunities to increase the local art, entertainment, and recreation economy.
- Providing more options for non-drivers has become a priority.
- A significant number of renters and homeowners are cost burdened; wages have not kept up with housing costs.
- Housing is predominantly single family; other types are somewhat limited.
- Post-secondary education options are limited.
- Demand on health care services is expected to grow.
- Mental health and substance abuse are key health challenges.

CURRENT ZONING AREAS IN BONNERS FERRY



JOBS AND INCOME

The largest industries in Bonners Ferry include the following:

- Health Care & Social Assistance (23%)
- Retail Trade (18%)
- Accommodation & Food Service (15%)
- Public Administration (13%)
- Educational Services (8.2%)

Countywide, the same top five industries are significant employers. Other industries that stand out in the County include Manufacturing (13%), Agriculture, Forestry, Fishing and Hunting (9%), and Construction (8%).

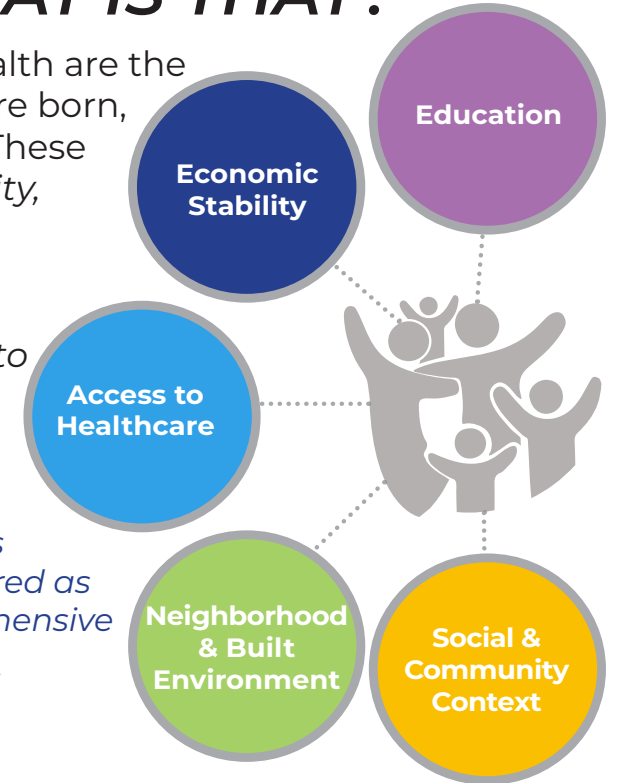
The median household income in Bonners Ferry (2019) was **\$32,000**. Significantly lower than the County's median household income of **\$43,423**.

Average Household Size in Bonners Ferry is: **2.32**

THE SOCIAL DETERMINANTS OF HEALTH: WHAT IS THAT?

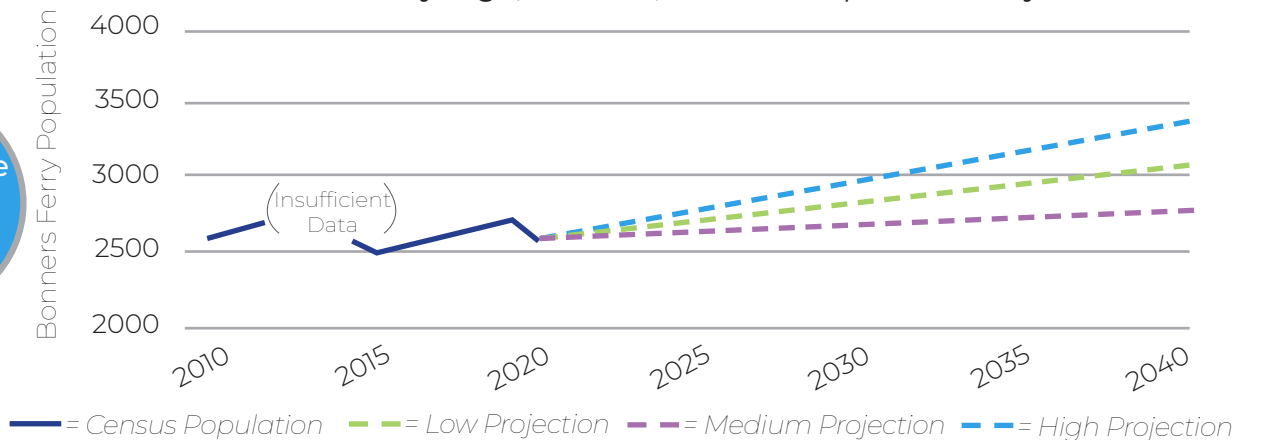
Social determinants of health are the conditions in which folks are born, grow, live, work, and age. These factors — economic stability, education, social and community context, neighborhood and built environment, and access to healthcare — are linked and directly impact the health and well-being of a community.

These factors are being considered as part of the Comprehensive Plan Update.



PREPARING FOR THE FUTURE

Bonners Ferry High, Medium, and Low Population Projections



	2020 Current	2042 Low (City/County Avg.)	2042 Med (County Rate)	2042 High (350 Potential New Units)
Population	2520	2895	3110	3332
Population Change		375	590	812
% Growth from 2020		14.9%	23.4%	32.2%
Annual Growth Rate		0.6%	1.1%	1.4%